
CORNELIAN FIELDS

SCARBOROUGH

Luxury as standard



THE SPLIT-LEVEL RUNSWICK

This split-level property is fully furnished* and ready to move into. Designed to flex to your family's needs this home offers a fabulous kitchen which opens to the living room, both rooms then open out into the south-facing garden. Underfloor heating throughout the ground floor adds a touch of luxury and a garage and parking add practicality to a home that is designed for how you live.

THE SPLIT-LEVEL RUNSWICK

4 BEDROOM HOUSE

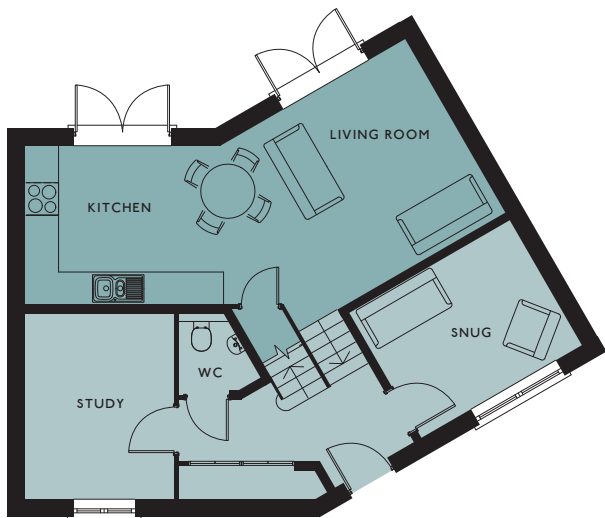
The split-level Runswick offers a unique modern layout. Access the snug or study from the hallway, or take the stairs down to the open plan living room, and high specification kitchen. There are four double bedrooms split over two levels with the master bedroom featuring a luxury en suite on the top floor.



*Furniture is available to purchase via separate negotiation

LOWER GROUND FLOOR

Living Room	4.37m x 3.71m	14' 4" x 12' 2"
Kitchen	3.97m x 2.95m	13' 0" x 9' 8"



GROUND FLOOR

Snug	3.44m x 2.67m	11' 3" x 8' 9"
Study	3.44m x 2.77m	11' 3" x 9' 1"

LOWER FIRST FLOOR

Bedroom 2	3.11m x 2.94m	10' 2" x 9' 7"
Bedroom 3	2.95m x 2.94m	9' 8" x 9' 7"



FIRST FLOOR

Master Bedroom	3.50m x 3.44m	11' 6" x 11' 3"
Bedroom 4	2.94m x 2.77m	9' 7" x 9' 1"

Images top left and clockwise: kitchen/living room, study, master bedroom, snug.
The living room and kitchen are at a lower level to the snug and study.
Bedroom 4 and the master bedroom are at a higher level than bedroom 2 and 3.
Measurements and floor plan layouts shown are for guidance purposes only and may vary.
Please check with our sales advisor to confirm the final specification of the property. January 2019.